

Lyla Weston

Height: 177
Hair: Brown

Dress: 36
Eyes: Blue

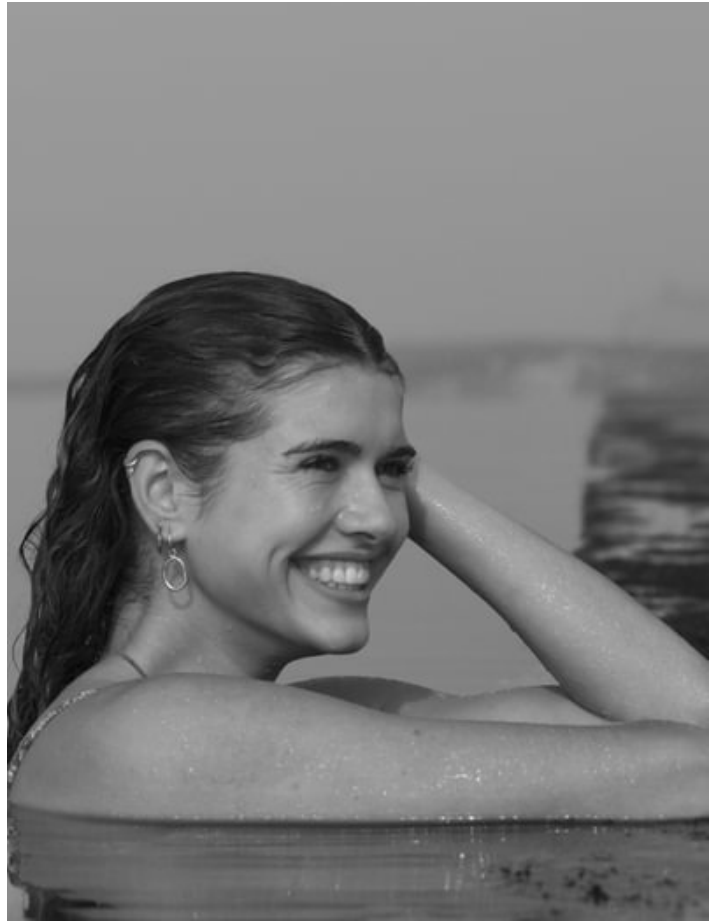
Bust: 87
international

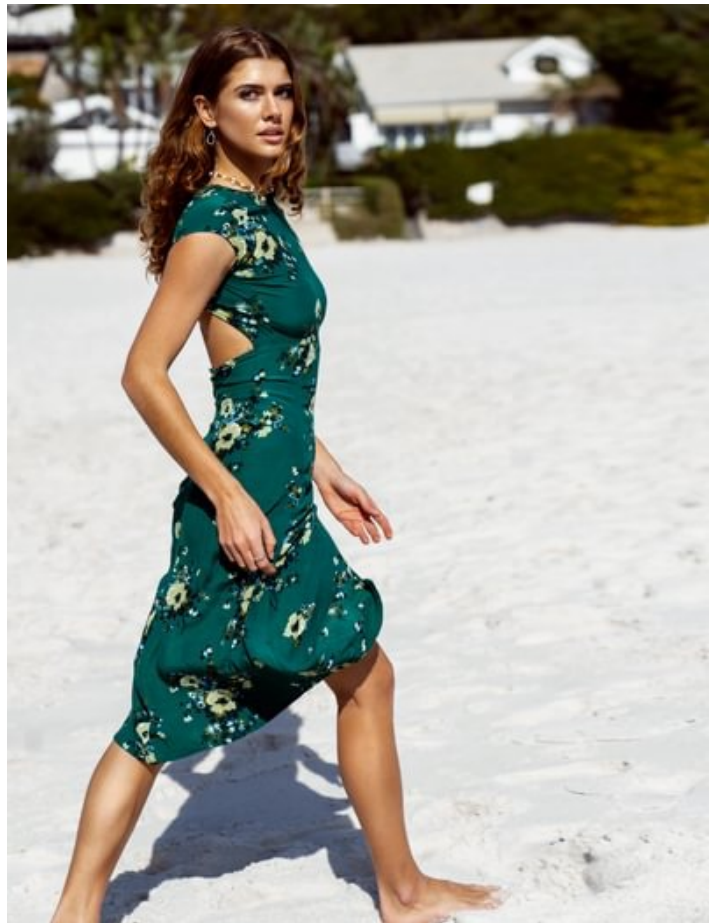
Taille: 64

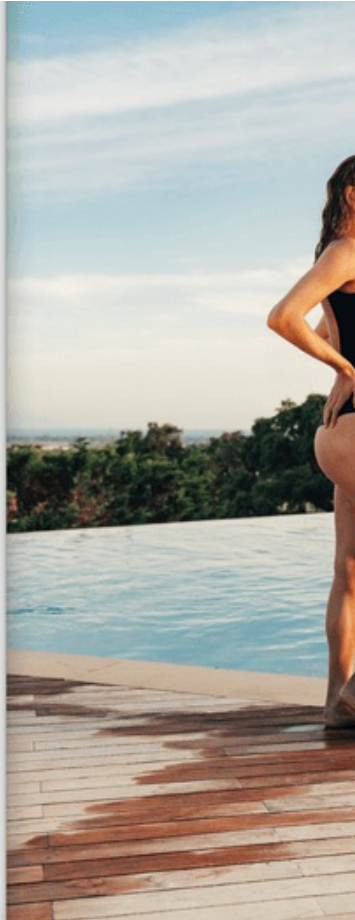
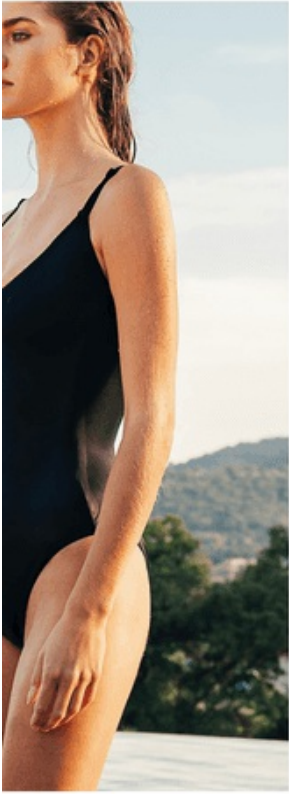
Hips: 93

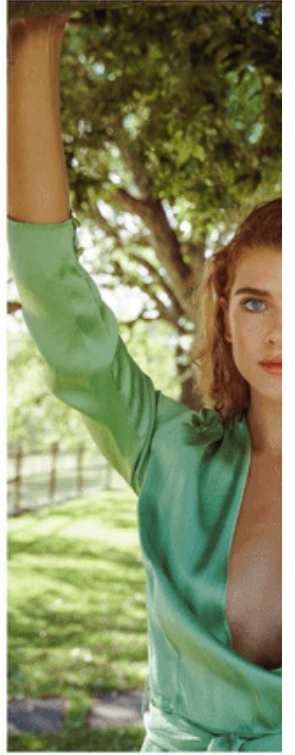
Shoe: 40















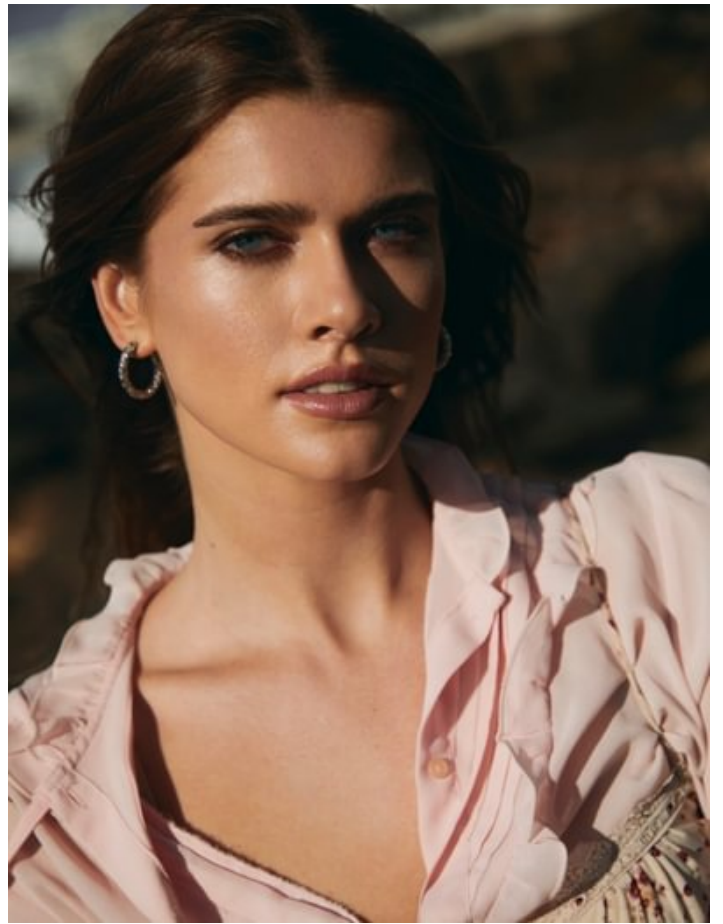












Blouse, C&A.
Sous une veste, Cos.
Chapeau, Courtols.
Créoles, Isabelle Toledano.
Collier de perles, Almira Paris.
Bague, Thomas Sabo.

